



Linde Material Handling

Linde



Double Pallet Stacker

D12-14

Capacity 1.2 t-1.4 t | Series 1173

Safe productivity booster

- Up to 1.400 kilograms on two pallets for maximum productivity
- Long tiller protects operator with automatic safety distance
- Creep speed function makes difficult maneuvers in narrow aisles easier
- Linde OptiLift® mast control ensures precise load handling
- With the powerful 1.5 kW AC engine, the trucks reach speeds of up to 6 km/h for increased handling capacity

TECHNICAL DATA (According to VDI 2198)

| Characteristics | 1.1 | Manufacturer | | Linde | Linde |
|-----------------|--------|---|------------|---|---|
| | 1.2 | Model | | D12 | D14 |
| Weights | 1.2.a | Series | | 1173 | 1173 |
| | 1.3. | Power Unit | | Battery | Battery |
| Wheels/Tyres | 1.4 | Operation | | Pedestrian | Pedestrian |
| | 1.5 | Load capacity/Load ¹⁾ | Q (kg) | 1200 (2000) | 1400 (2000) |
| Dimensions | 1.6 | Load centre distance | c (mm) | 600 | 600 |
| | 1.8 | Axle centre to fork face ^{2) 3)} | x (mm) | 931/842 | 931/842 |
| Performance | 1.9 | Wheelbase ^{2) 4)} | y (mm) | 1686/1597 | 1686/1597 |
| | 2.1 | Service weight ($\pm 10\%$) | (kg) | 1075 | 1075 |
| Others | 2.2 | Axle load with load, front/rear ($\pm 10\%$) | (kg) | 892/1383 | 842/931 ^{2) 3) 4)} |
| | 2.3 | Axle load without load, front/rear ($\pm 10\%$) ²⁾ | (kg) | 710/365 | 710/365 |
| Drive | 3.1 | Tyres rubber, SE, pneumatic, polyurethane | | Rubber + polyurethan/ polyurethan | Rubber + polyurethan/ polyurethan |
| | 3.2 | Tyre size, front | | $\emptyset 230 \times 90$ | $\emptyset 230 \times 90$ |
| Performance | 3.3 | Tyre size, rear ⁵⁾ | | $\emptyset 85 \times 85 (\emptyset 85 \times 60)$ | $\emptyset 85 \times 85 (\emptyset 85 \times 60)$ |
| | 3.4 | Auxiliary wheels (dimensions) | | $\emptyset 150 \times 50$ | $\emptyset 150 \times 50$ |
| Dimensions | 3.5 | Wheels, number front/rear (x = driven) ⁵⁾ | | 1x + 1/2 (1x + 1/4) | 1x + 1/2 (1x + 1/4) |
| | 3.6 | Track width, front (± 5 mm) | b10 (mm) | 534 | 534 |
| Performance | 3.7 | Track width, rear (± 5 mm) | b11 (mm) | 380 | 380 |
| | 4.2 | Height of mast, lowered ⁶⁾ | h1 (mm) | 1915 | 1915 |
| Dimensions | 4.3 | Free lift ⁶⁾ | h2 (mm) | 1395 | 1395 |
| | 4.4 | Lift ⁶⁾ | h3 (mm) | 4266 | 4266 |
| Performance | 4.5 | Height of mast, extended ⁶⁾ | h4 (mm) | 4786 | 4786 |
| | 4.6 | Initial lift | h5 (mm) | 125 | 125 |
| Dimensions | 4.9 | Height of tiller arm in operating position, min/max | h14 (mm) | 1162.5/697.5 | 1162.5/697.5 |
| | 4.15 | Height, lowered | h13 (mm) | 86 | 86 |
| Performance | 4.19 | Overall length ^{4) 7)} | l1 (mm) | 2120 | 2120 |
| | 4.20 | Length to fork face ⁴⁾ | l2 (mm) | 971 | 971 |
| Dimensions | 4.21 | Overall width | b1/b2 (mm) | 800 | 800 |
| | 4.22 | Fork dimensions DIN ISO 2331 | s/e/l (mm) | 71 \times 180 \times 1150 | 71 \times 180 \times 1150 |
| Performance | 4.24 | Width of fork carriage | b3 (mm) | 780 | 780 |
| | 4.25 | Fork spread | b5 (mm) | 560/680 | 560/680 |
| Dimensions | 4.26 | Straddle legs spread (from inside), min/max | b4 (mm) | 200/320 | 200/320 |
| | 4.32 | Ground clearance, centre of wheelbase ²⁾ | m2 (mm) | 30 | 30 |
| Performance | 4.34.1 | Aisle width for pallets 1000 \times 1200 crossways | Ast (mm) | 2.722 (2.835) ^{9) 11) 12) 13)} | 2.722 (2.835) ^{9) 11) 12) 13)} |
| | 4.34.2 | Aisle width with pallet 800 \times 1200 along forks ⁴⁾ | Ast (mm) | 2584/2697 ^{9) 10) 4)} | 2584/2697 ^{9) 10) 4)} |
| Performance | 4.35 | Turning radius ⁴⁾ | Wa (mm) | 1902/2015 ^{9) 10) 4)} | 1.902 (2.015) ^{9) 13)} |
| | 5.1 | Travel speed, with/without load ($\pm 5\%$) ⁷⁾ | (km/h) | 6/6 | 6/6 |
| Performance | 5.2 | Lifting speed, with/without load ($\pm 10\%$) ^{8) 9)} | (m/s) | 0.16/0.30 | 0.15/0.30 |
| | 5.3 | Lowering speed, with/without load ($\pm 10\%$) ⁸⁾ | (m/s) | 0.40/0.35 | 0.45/0.35 |
| Performance | 5.8 | Maximum climbing ability, with/without load | (%) | 10 (8)/24 | 10 (8)/24 |
| | 5.9 | Acceleration time, with/without load | (s) | 9/10 | 9/10 |
| Drive | 5.10 | Service brake | | Electro | Electro |
| | 6.1 | Drive motor rating S2 60 min | (kW) | 1.5 | 1.5 |
| Performance | 6.2 | Lift motor rating at S3 15 % | (kW) | 3.2 | 3.2 |
| | 6.3 | Battery according to DIN 43531/35/36 A, B, C, no | | 3 PzS-SL | 3 PzS-SL |
| Drive | 6.4 | Battery voltage/rated capacity (5 h) | (V/Ah) | 24/375 | 24/375 |
| | 6.5 | Battery weight ($\pm 10\%$) | (kg) | 4 PzS SL, Li-ION 205 Ah: 23/205 | 4 PzS SL, Li-ION 205 Ah: 23/205 |
| Performance | 6.5 | Battery weight with case ($\pm 10\%$) | (kg) | 4 PzS SL, Li-ION 410 Ah: 23/410 | 4 PzS SL, Li-ION 410 Ah: 23/410 |
| | 6.5 | Battery weight with case ($\pm 10\%$) | (kg) | 280/320 | 280/320 |
| Performance | 6.5 | Battery weight with case ($\pm 10\%$) | (kg) | 4 PzS SL, Li-ION 205 Ah: 312 | 4 PzS SL, Li-ION 205 Ah: 312 |
| | 6.5 | Battery weight with case ($\pm 10\%$) | (kg) | 4 PzS SL, Li-ION 410 Ah: 351 | 4 PzS SL, Li-ION 410 Ah: 351 |
| Performance | 6.6 | Power Consumption according to VDI cycle normalized | (kWh/h) | 1.25 | 1.37 |
| | 6.7 | Turnover output according to VDI cycle | (T/h) | 54.6 | 62.4 |
| Performance | 6.8 | Power Consumption on turnover output | (kWh/h) | 1.39 | 1.51 |
| | 8.1 | Type of drive unit | | LAC | LAC |
| Others | 10.7 | Sound pressure level LpAZ (at the driver's seat) | (dB(A)) | < 66 | < 66 |

1) In brackets: pallet truck capacity on the support arms, with initial lift option

2) Support arms low position/high position

3) Values with a T mast (+ 26 mm for S or D mast)

4) Values with 6.3 line battery for 3 PzS

5) In brackets: truck equipped with boogie option

6) Values with standard mast 4266T; for other values see mast table

7) Value with lowered platform

8) Free-lift with booster option = 0.40 m/s

9) Value with creep speed tiller

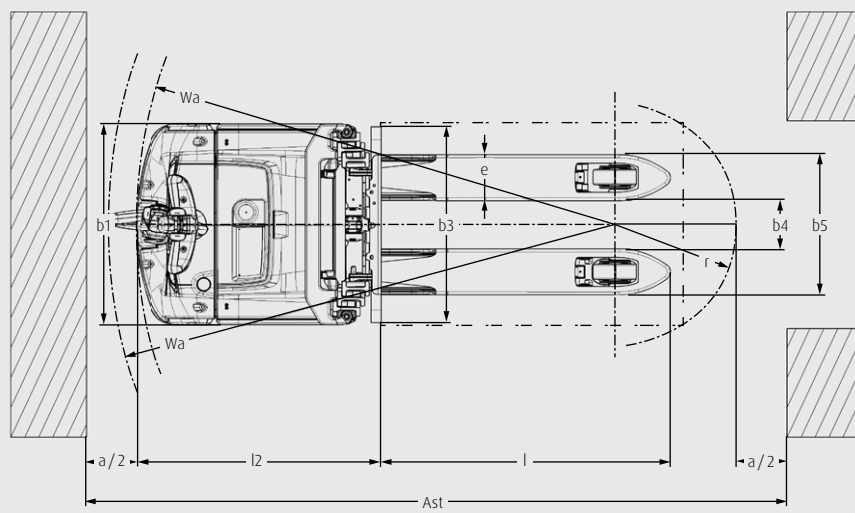
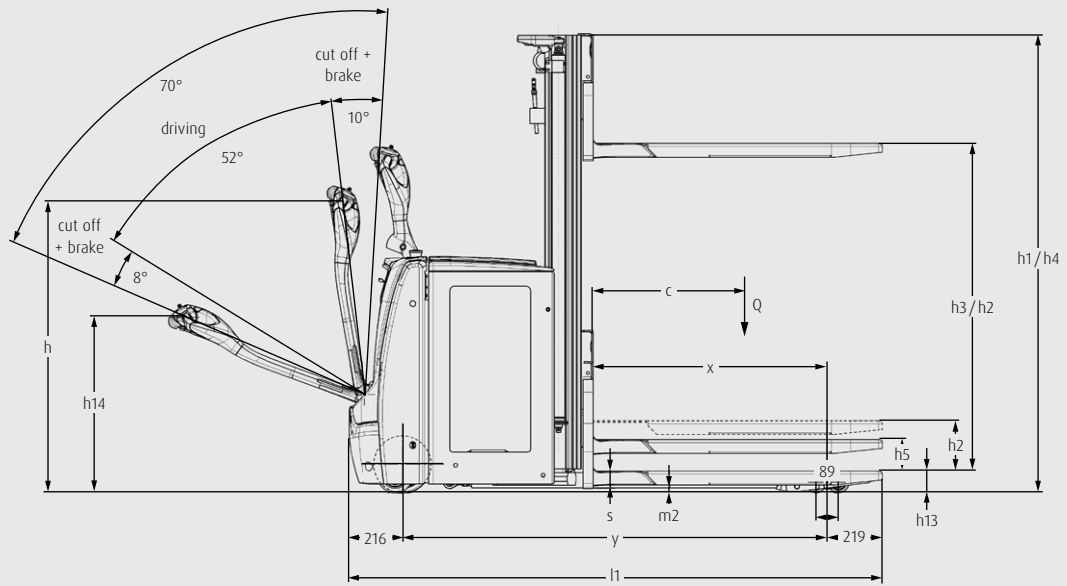
10) Value with bumper

11) Initial lift with tiller creep speed

12) Initial lift with bumper

13) Initial lift with closed platform

14) Initial lift with lowered platform



MAST TABLES

STANDARD MAST (in mm)

| Lift | h3: 1574 | h3: 1924 | h3: 2424 | h3: 2924 | h3: 3324 | h3: 3824 |
|----------------------------|--|--|--|--|--|--|
| Height measurements | h1: 1315 h2: 150 h3+h13: 1660 h4: 2110 | h1: 1490 h2: 150 h3+h13: 2010 h4: 2460 | h1: 1740 h2: 150 h3+h13: 2510 h4: 2960 | h1: 1990 h2: 150 h3+h13: 3010 h4: 3460 | h1: 2190 h2: 150 h3+h13: 3410 h4: 3860 | h1: 2440 h2: 150 h3+h13: 3910 h4: 4360 |
| Model | | | | | | |
| D12 | <input type="radio"/> | <input type="radio"/> | <input type="radio"/> | <input type="radio"/> | <input type="radio"/> | <input type="radio"/> |
| D14 | <input type="radio"/> | <input type="radio"/> | <input type="radio"/> | <input type="radio"/> | <input type="radio"/> | <input type="radio"/> |

DUPLEX MAST (in mm)

| Lift | h3: 1574 | h3: 1924 | h3: 2424 | h3: 2924 | h3: 3324 | h3: 3824 |
|----------------------------|--|--|---|---|---|---|
| Height measurements | h1: 1240 h2: 704 h3+h13: 1660 h4: 2110 | h1: 1415 h2: 879 h3+h13: 2010 h4: 2460 | h1: 1665 h2: 1129 h3+h13: 2510 h4: 2960 | h1: 1915 h2: 1379 h3+h13: 3010 h4: 3460 | h1: 2115 h2: 1579 h3+h13: 3410 h4: 3860 | h1: 2365 h2: 1829 h3+h13: 3910 h4: 4360 |
| Model | | | | | | |
| D12 | <input type="radio"/> | <input type="radio"/> | <input type="radio"/> | <input type="radio"/> | <input type="radio"/> | <input type="radio"/> |
| D14 | <input type="radio"/> | <input type="radio"/> | <input type="radio"/> | <input type="radio"/> | <input type="radio"/> | <input type="radio"/> |

TRIPLEX MAST (in mm)

| Lift | h3: 1574 | h3: 3516 | h3: 4266 |
|----------------------------|--|---|---|
| Height measurements | h1: 1165 h2: 629 h3+h13: 1660 h4: 2067 | h1: 1665 h2: 1129 h3+h13: 3602 h4: 4052 | h1: 1915 h2: 1379 h3+h13: 4352 h4: 4802 |
| Model | | | |
| D12 | <input type="radio"/> | <input type="radio"/> | <input type="radio"/> |
| D14 | <input type="radio"/> | <input type="radio"/> | <input type="radio"/> |

Optional equipment

h1: Height of mast, lowered

h2: Free lift

h3: Lift

h4: Height of mast, extended

h3+h13: Lift + Fork height

STANDARD AND OPTIONAL EQUIPMENT

| Model/Equipment | | D12 | D14 |
|-----------------------------|---|-----|-----|
| Safety | Long tiller with low mounted | ● | ● |
| | Automatic speed reduction when cornering | ● | ● |
| | Key switch | ● | ● |
| | Log in PIN code | ○ | ○ |
| Service | CAN bus architecture | ● | ● |
| Digitalisation | Linde Connected Solutions: | ○ | ○ |
| | ac: access control (PIN or RFID Dual), | ○ | ○ |
| | an: usage analysis and dt: crash detection | ○ | ○ |
| | Data transfer online | ○ | ○ |
| | Data transfer WIFI | ○ | ○ |
| | Bluetooth USB Stick | ○ | ○ |
| Operation/ Load Handling | Ultra fast fitting | ○ | ○ |
| | Initial lift | ● | ● |
| | Creep speed control | ● | ● |
| | Proportional speed | ○ | ○ |
| | Linde Safety lift function | ● | ● |
| | Pallet stop | ● | ● |
| | Soft landing of forks | ○ | ○ |
| | Load backrest 1000 mm | ○ | ○ |
| Environment | Cold store -35 °C (in / out) | ○ | ○ |
| Workplace | Multifunction coloured display hour meter, maintenance indication, battery discharge indicator and internal fault code indication | ● | ● |
| | Spacious storage compartments | ● | ● |
| | Pack clipboard | ○ | ○ |
| Mast | Standard | ○ | ○ |
| | Simplex | ○ | ○ |
| | Duplex | ○ | ○ |
| | Triplex | ○ | ○ |
| | Mast protection: polycarbonate | ● | ● |
| | Mast protection: mesh | ○ | ○ |
| Attachment/ Forks | Fork carriage 560/1150/55 mm | ● | ● |
| | Fork carriage 680/1150/55 mm | ○ | ○ |
| Axles and Tyres | Drive wheels polyurethane | ● | ● |
| | Drive wheels cushion rubber, non marking, wet grip | ○ | ○ |
| | Single load wheels polyurethane | ● | ● |
| | Tandem load wheels gresseable or no gresseable | ○ | ○ |
| | Single castor wheels | ● | ● |
| | Double castor wheels gresseable | ○ | ○ |
| Drive and Brake-system | OptiLift® system | ● | ● |
| | 1.5 kW AC (maintenance free) | ● | ● |
| | Electromagnetic braking system | ● | ● |
| | Battery compartment, lateral change 3 PzS (345 Ah/375 Ah) | ● | ● |
| | Battery compartment, lateral change 4 PzS (460 Ah/500 Ah) | ○ | ○ |
| | Battery compartment, Li-ION battery 4.5 kWh (205 Ah)/9.0 kWh (410 Ah) inclusive side plug for opportunity charging | ○ | ○ |
| Li-ION 24 V charger | ○ | ○ | |

● Standard equipment

○ Optional equipment

CHARACTERISTICS



Low mounted tiller

Safety

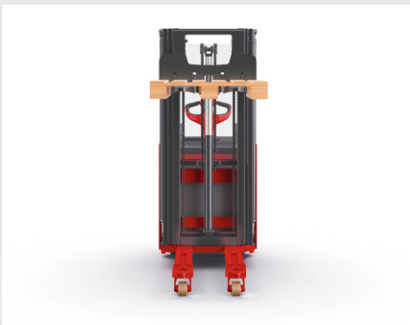
- Long, low-mounted tiller protects the driver from injury
- The trucks automatically reduce the speed when cornering
- Load-dependent, electromagnetic brake prevents accidents
- Excellent view of the load through the mast makes maneuvering at high rack levels easier



Spacious workstation

Ergonomics

- One-handed operation of all driving and lifting functions with tiller head for quick, easy transportation
- Creep speed enables precise, convenient load handling
- Numerous storage compartments
- Multifunctional display provides an overview of all the truck information



Efficient transport of two pallets

Handling

- Linde OptiLift® mast control ensures precision at a fast pace of work
- Top speed of 6 km/h even with double loads of up to 1400 kilograms and ensure increased handling capacity
- Pallet stop ensures well positioning of pallets
- Double stacking function allows simultaneous transport of two pallets with a weight of 1000 kg each
- Precise steering for precise maneuvering



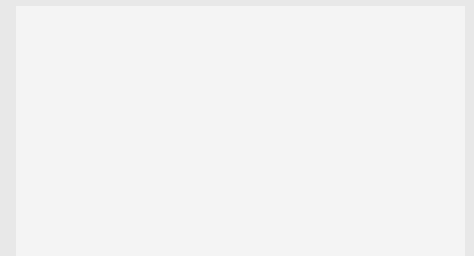
All components are easily accessible

Service

- Maintenance-free 1.5 kW AC engine guarantees high availability
- CAN bus system for quick and easy diagnosis via notebook
- Easy access to all components

Subject to modification in the interest of progress. Illustrations and technical details could include options and not binding for actual constructions. All dimensions subject to usual tolerances.

Presented by:



Linde Material Handling GmbH
Carl-von-Linde-Platz | 63743 Aschaffenburg | Germany
Phone + 49 6021 99 0 | Fax + 49 6021 99 1570
www.linde-mh.com | info@linde-mh.com

Printed in Germany | 750.e.0,5.0221.IndA.se